

Parish Calendar, News & Notices

Weekend Mass Times

To assist in planning ahead

24th Sunday of the Year (3)
Fri Sep 14
Kaikoura (6p) Confirmation & First Communion
+John/John/Pat

Sat Sep 15
Blenheim (5pm) Mass/Fr Matt Crawford SM

Sun Sep 16
Seddon (8am) **Cancelled**
Picton (9am) Mass/Fr Pat
Kaikoura (9.30) **W&C**
Blenheim (10) Confirmation & First Communion
+John/John

Havelock (11am) Mass/Fr Pat
Seddon (2pm) Confirmation & First Communion
+John/John/Pat
Sep 22-27: John in Melbourne for two Province meetings.

25th Sunday of the Year (4)

Sat Sep 22
Blenheim (5pm) Mass/Fr Don

Sun Sep 23
Seddon (8am) Mass/Visitor
Picton (9am) **W&C**
Kaikoura (9.30) Mass/Fr Pat
Blenheim (10am) Mass/ Visitor
Havelock (11am) **W&C**
Renwick (5pm) Mass/Fr

26th Sunday of the Year (5)

Sat Sep 29
Blenheim (5pm) Mass/Fr John

Sun Sep 30
Seddon (8am) **W&C**
Picton (9am) Mass/Fr John
Kaikoura (9.30) Mass/Fr Pat
Blenheim (10am) **W&C**
Havelock (11am) Mass/Fr John

27th Sunday of the Year (1)

Sat Oct 6
Blenheim (5pm) Mass/Fr Pat

Sun Oct 7
Seddon (8am) Mass/Fr John
Picton (9am) Mass/Fr Pat
Kaikoura (9.30) **W&C**
Blenheim (10am) Mass/Fr John

Cuppa after to meet visiting Passionist Leaders.
Please bring a plate.

Havelock (11am) Mass/Fr Pat

23rd OL Star of the Sea (2)

Sat Oct 13
Blenheim (5pm) Mass/Fr Pat

Sun Oct 14
Seddon (8am) **W&C**
Picton (9am) Mass/Fr Pat
Kaikoura (9.30) Mass/Fr John
Blenheim (10) **W&C**
Havelock (11) Mass/Fr Pat

Community Matters

Preschool: Office Manager

Are you looking for a fantastic opportunity that fits with family life?

St Mary's Preschool is a small, not-for-profit early childhood centre that operates 42 weeks each year, 8:30-3pm Mon-Fri.

This is currently a Monday-Friday 20 hour/week position (with potential for growth).

Please email Kate for a full job description:

board@stmaryspreschool.co.nz

Applications close 5pm 21

September, with a preferred start

date of 15 October 2018

Full details on trade me jobs:

<https://www.trademe.co.nz/Browse/Listing.aspx?id=1764525077&ed=true>

Parish Events

Sep 22 : SMF (St Marys Friends) School Garage Sale

If you have anything that you want to donate, drop it off to the School during the week leading up to Saturday. This is fundraising for education outside the classroom. This will be an annual fundraiser and will replace the White Elephant Stall normally at the School Gala in March.

Sep 23 Villa Maria College Past Pupils' Assn Invitation

Our 'Mercy Top of the South' gathering for all Villa Maria & other Mercy College Past Pupils' celebrating Mass together at St Mary's Church, Blenheim at 10 am.

Following this, we will gather for lunch at Clubs of Marlborough (approx. 12 noon). You are very welcome to join this gathering for Mercy Women. For further information please email Sonya sfi@villa.school.nz

Sep 30: Renwick Mass

Renwick Mass (5pm) with BYO finger food to follow. Celebrating the completion of the external repairs and painting.

Oct 7 .. Sounds Like Lunch.

Sounds Communities are having lunch together. Venue to be advised, catering for up to 50 people. An opportunity to meet up and enjoy time together.

Oct 7: Rosary Aotearoa is encouraging parishes and groups to gather at different locations around the country at 3pm on Sunday 7 October to pray the Rosary. For more infor-

mation and to register a group and location see

www.rosarynewzealand.nz.

Parish Calendar

September

Sep 16 .. 25th Sunday

Renwick: Mass has changed to Sep 30, 5pm.

Sep 18 .. Ministry Day in Wellington (John/Pat/Maureen/Frances Anna)

Parish Pastoral Council

Sep 20 .. St Mary's Preschool Board

Sep 23 .. 26th Sunday

Sep 25 .. Finance & Property C'tee

Sep 28 .. Last Day of School Term

Sep 29 .. Picton: Church & Grounds

Spring Clean Working Bee

Sep 30 .. 27th Sunday

Kaikoura: Sacred Heart AGM

Renwick Mass (5pm)

Sounds Stewardship Group

October

Oct 1 .. Wairau Stewardship

Oct 2 ..

Oct 4 .. BCMA (Christian Ministers)

Oct 7 .. 28th Sunday

Blenheim: Family Groups

Promotion

Oct 7 .. Sounds Like Lunch

Oct 14 .. 29th Sunday

Oct 15 .. School Term 4 starts

Kaikoura: Stewardship

Oct 18 .. Preschool Board

Oct 21 .. 30th Sunday

Oct 22 .. Labour Day Holiday

Sept 23 .. Parish Pastoral Council

Oct 28 .. 31st Sunday

Oct 29 .. Marlborough Day Holiday

November

Nov 15 .. Blenheim: Bereavement

Mass

Nov 25 .. Feast of Christ the King

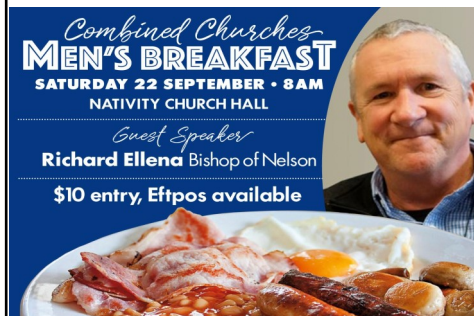
December

Dec 9 .. Blenheim: Christmas in the

Park

Dec 11 .. Kaikoura: School Mass &

Graduation



Please sign up after mass today, in the foyer, or ring Denis 0274761917 By Thurs 20th Sept

Let Us Remember in our Prayers and at Mass:

Recently Deceased: John O'Halloran (PN), Bert Smith (BHM), Jacek Kundycki (BHM), Bradley Inwood (Wgtn)

Anniversaries: Sep 16 Sarah Edgar 17 Maria Rawiri, Esther Kerr, John Harnett, Andrew Lawson 18 Bernadine Smith, Bernard McSwigan, Mary Kerr, Ernest Wallace, Mediterranean Jacobs, Desmond Aitken 20 Edward Poharama, Austin Smith 21 Mei Ropata, Ernest Baker-Garrett, Walter Strawbridge, Margaret Andrews 22 Sarah Smith, Paul Smith, Elsie Willson 23 Peter Rayner

Other Intentions: A special intention, Joevil Balasomo de la Cruz

COLLECTIONS:

We are most grateful for your support of our Parish of Star Of The Sea.

Last week:

AP's: \$4117.66

Envelopes: \$1598.50

Loose: \$ 712.30

Maori Pastoral Care: \$ 47.70

thank you!



Te Whetu o te Moana | Star of the Sea Marlborough Catholic Parish

From the Sounds to the Sea, the Mountains to the Plains

We Are One Mission. One Parish. Seven Communities

Blenheim | Havelock | Kaikoura | Picton | Renwick | Seddon | Ward

Parish Office: 61 Maxwell Road, Blenheim | T. 03 578 0038

EM. office@staroftheseamarlb.co.nz | FB. Star of the Sea Marlborough (233 likes)

WEB. www.staroftheseamarlb.co.nz

Newsletter No 35: 16 September 2018

24th Sunday of the Year (B)

A Warm Welcome to Our Parish Family of Marlborough

We the people of Te Whetu O Te Moana, Star of the Sea Parish, are committed by our baptism in Christ, to share our living faith, and make God visible, in joyful union with all people, by our actions in the community. (Parish Mission Statement)

Parish Priest: Fr John Pearce CP (BHM)

john.pearce@passionists.com 021 242 1504

Assistant PP: Fr Pat McIndoe CP (BHM)

patmc21@gmail.com 03 578 0038

Past Assist: Sr Maureen Connor SSM

maureensmsm@yahoo.co.nz

Past Assist: Sr Frances Anna SSM

francesmsm@gmail.com

Manager/Secretary: Ginetta Petersen.

Office Assistant: Mandy Li (BHM);

Youth Ministers: Maurice & Mieke Davies

stmarysyouthgroup@xtra.co.nz 03 578 6772

Parish Pastoral Council Chair: Greg Stretch

Parish Finance Committee Chair: Tom Harrison



We Celebrate the Sacraments of Christian Initiation: Baptism, Confirmation & Communion

Welcome to our candidates and their families as they celebrate Sacraments this weekend across the parish. Welcome to our Bishop, Cardinal John Dew, as he confirms our children in Kaikoura, Blenheim and Seddon.

In Blenheim we are Baptising **Caitlyn and Jayden Mitchell**. Caitlyn is starting the journey, while Jayden will receive all three Sacraments.

In Kaikoura, these will be confirmed and receive First Communion: Abraham Pattison, Amaia Ngaporo, Chloe-Ann Laugeson, Kahurangi Ngaporo, Libby Jean Bell-Speirs, Sacha tui Surgenor, Te Pakihana Hawke-TeUa, Tom Adams.

In Blenheim, most will be confirmed and receive Communion, a few (*) Communion only: Ashlee Hickman*, Dominique Kula, Eliza Tapueluelu, Erin Gleeson, Gabrielle Tiongsin, James

Franken, Jayden Mitchell, Loleni Pahulu, Lukas Dowling, Maddison Hammond, Madison Dowling, Mafi Pahulu, Sosifa Talueluelu, Taetuna'ula Kula, Talipaea Pahulu.

In Seddon, most will be confirmed and receive Communion, a few (*) Communion only: Helena Maher, Holly Hickman*, Jonty Hickman, Louis Hickman, Lucia Maher, Matthew Hickman*, Samantha Hickman, Victoria Hickman.



As we learnt in our formation sessions, Cardinal John confirms both the choice the parents made when they brought their children for Baptism, and the choice today by our children seeking the Sacrament, where he says:

Be Sealed with the Gift of the Holy Spirit.

Today, these children are fully members of the Body of Christ, the Church. Let's support them as they grow to share in our common mission.

John Pearce CP

Readings for Twenty Fourth Week Ordinary Time

Sun 16th: Twenty Fourth Week Ordinary Time

Isaiah 50:5-9 James 2:14-18 Gospel Mark 8:27-35

Psalm response: I will walk in the presence of the Lord in the land of the Living

Mon 17th: 1 Corinthians 11:17-26,33 Gospel Luke 7:1-10

Tues 18th: 1 Corinthians 12:12-14,27-31 Gospel Luke 7:11-17

Wed 19th: 1 Corinthians 12:31-13:13 Gospel Luke 7:31-35

Thu 20th: Sts Andrew Taegon, Paul Chong Hasang & Comp. Mm.

1 Corinthians 15:1-11 Gospel Luke 7:36-50

Fri 21st: St Matthew, Apostle & Evangelist

Ephesians 4:1-7, 11-13 Gospel Matthew 9:9-13

Sat 22nd: 1 Corinthians 15:35-37, 42-49 Gospel Luke 8:4-15

Sun 23rd: Twenty Fifth Week Ordinary Time

Wisdom 2:12,17-20 James 3:16:4:3 Gospel Mark 9:30-37

Passionist Family Groups

PASSIONIST FAMILY GROUP MOVEMENT



Where did Passionist Family Groups come from?

The Passionist Family Group Movement was founded by Fr Peter McGrath CP in 1972 in the (then) small parish of Terry Hills in Sydney, Australia. This small parish, gradually grew, and with it so did the Family Groups, peaking eventually at around 26 groups, involving about 350 families.

The spread of the Family Groups (FG's) around Australia under the direction of the Passionists began slowly in 1982. By early 1992 they had spread to over 180 parishes in Australia. Today Passionist Family Groups can be found throughout Australia & New Zealand, USA, UK, Ireland & Scotland.

Passionist Family Groups NZ

Passionist Family Groups began in New Zealand in June 1988. They are well established, with effective leaders across each diocese. The FG's in NZ are the most extensive network. They also have grown into non Catholic Churches as well.

Our NZ Coordinators are John & Mary-Ellen Lean in Wellington, and Paul & Linda Darbyshire in Palmerston North. Working with them is Melbourne based Fr Brian Traynor CP. Over many years he has worked with partners in developing healthy leadership models with the movement.

What is a Passionist Family Group?

Each group has somewhere between 10-12 Family Units, 24-40 people including children. In forming the groups we try match children of a similar age, and a cross section of adults so that it resembles an extended family. In recent years, new family groups have emerged supporting young families. At the same time, groups have formed to support a variety of cultures in our diverse parishes.

What do Groups Do?

The emphasis is on building relationships, so the groups are about 'being' rather than 'doing'.

Each group is encouraged to get together once a month for a low cost or no cost activity.

These gatherings allow people to get to know one another, and then in natural ways, group members begin to create bonds with others. With the building of bonds comes the opportunity to form friendships, have fun, extend acceptance and support, and quite simply and joyfully experience Christian life with others. The emphasis is on allowing everyone to be part of the 'family'.

How do Passionist Family Groups help the parish?

The networking of families has immediate effects on parish liturgy and within a few months more people are keen to become involved in the life of the parish. Many pastoral needs such as visiting one another, or helping each other in practical ways in special times of need, build parish life and help people understand what belonging to a church really means.



Family groups support and encourage the life of the family as well as provide an important sense of belonging for many who have lost it, through death or breakdown,

Can Anyone Join?

The simple answer is 'yes'. The family group motto is 'a family for all'. We define "family" as one or more people in the household. Yes, you can be single.

My Experience of FG's Over the Past 35 years (John)

In the early 1980's I helped out at Terry Hills on weekends. I saw the dynamism of the parish first hand that came from so many people who were connected through Family Groups, and thus connected to the Church.

In the past 20 years as a parish priest I have seen the good supportive relationships that happened in both parishes I served. Attending FG functions has helped



me get to know parishioners, and to be part of the lives of our families.

In Blenheim, Sydney & Melbourne, I have seen people being more connected to others and to church, and helping people in times of struggle, due to the FG connections. FG's gave me the opportunity to get to know parishioners better.

One FG in Sydney was the backbone of our Farm Days in western Sydney, a social enterprise farm that supported people leaving prisons, and with various mental health ailments. That gave rise to the Farm Masses in the shed after our work around the farm. Being part of the leadership team, we helped plan co-operative activities, like a Trivia Night, and a Pot Luck Parish Meal.

One of the first parish activities I attended was a FG weekend for Mass. All the kids were so young, it was like visiting Pre-school. Now 10 years later I still go on their weekend camps if they coincide with my annual leave. Kids and parents are 10 years older, but I'm younger!!, so I just fit in OK.

Further Information

For further information, or a conversation, contact John or Pat at the Parish, or fill out a card in the Blenheim Church Foyer.

Family Groups Information Weekend

On October 6-7, John and Mary-Ellen Lean will be speaking at Masses in Blenheim about Family Groups. We already have 4 families interested in knowing more about these and possibly being part of a new group.

Contact us and we will facilitate contact.

Social Justice Week: Enabling Communities

Enabling Communities
Everyone has a part to play
Ehara taku toa i te toa takitahi,
engari he toa takitini
My achievements and strengths
are not those of the individual,
but those of the many.

Most people with disabilities are living and participating in local communities. **Social Justice Week 2018** challenges the church to become more fully informed, inclusive in attitude and active in making our parishes, communities and society truly welcoming and accessible to people with a disability. Equally challenging is the invitation to people with disability and their families to acknowledge themselves as tāngata whaikaha, "people in search of or pursuing strength" to discover their authentic and visible place within the Body of Christ. Therefore, the theme, "Enabling Communities: Everyone has a part to play," re-

minds each one of us of our responsibility to change attitudes, remove barriers, make space for each other and mould relationships of respectful equality and interdependence in membership and ministry so we may come to rejoice in our God-given diversity and the uniqueness of each member.

Please take a copy of the reflection booklet to continue with this material.



Concluding prayer

E Hēhu Karaiti, Lord Jesus,
You learned, like us,
that being human means
experiencing times of weakness
and times of strength.

But you tell us,
that when we are weak,
we are strong.
It is then that we know
that we need you
and one another.
Help us to stand
alongside each other,
in good times and in bad.
Amen.

Christmas Boxes



Since 1993, Samaritan's Purse has partnered with local churches around the world to deliver 157 million [Operation Christmas Child](#) shoebox gifts to children in need in 160 countries. Each one—packed full of fun toys, school supplies, and hygiene items by a family or individual—is sent with prayer that the child who receives it will experience God's love through their simple gifts. Internationally Operation Christmas Child is in its 25th Year. For the last few years our parish has been involved and below are the figures for last years Appeal:

New Zealand wide collection Totaled:
30,038 boxes
(South Is: 7,769 / North Is: 22,269)
For Marlborough, its share was:
290 boxes.

The boxes from New Zealand go to South East Asia and the Pacific.

It's time again to think about those children who may never receive a gift in their lifetime. There are a few do's and don'ts with what goes in the box but there is a pamphlet that will help you fill it.

St Mary's School and preschool are involved for the first time and St Vincent De Paul in Picton is the pick up and drop off point for that area.

Ginetta will be at both Blenheim Masses next weekend giving out boxes or you can collect them from the office.

Once they are filled, bring them back along with \$10 for shipping per box.

On Labour weekend (21st Oct) the boxes will be blessed at Mass before being packed up to go to Christchurch where they will be double checked and

put in a shipping container and sent overseas.

The final deadline for Marlborough is 23rd October.

Below are last year's boxes ready to go south. If you have access to a very large van, we would appreciate someone taking the boxes to CHCH for us. Please contact Ginetta at the office.



Kaikoura: Ministers of Care

Ministers of Care: A Reflection Session with Sr Maureen

The lovely material we looked at today was about prayer and sharing. Our ministry is one of privilege and love. When we take the Lord to others we gain spiritually as much as we give. Some of the comments; privilege, humility, learning from each other and caring for each other. Thank you Sr. Maureen for the time you took to put the material together. Patsy

The photo shows just some of those taking part.

